



DHWANI INDUSTRIES

AN ISO 9001 : 2015 CERTIFIED COMPANY



**COMPLETE RANGE OF GENUINE QUALITY
REPLACEMENT SPARE-PARTS, SUITABLE FOR:**

AUTO CONE (MODEL 138 / 238 / 338 / AC-5 / X-5 / AC-6) &
MACH CONE (MODEL 7-II / 7-V / 21-C / QPRO PROCESS CONE)
WINDING MACHINES.

☑ TECHNOLOGY ☑ QUALITY
☑ SATISFACTION ☑ RELATIONSHIP

Thinking of Autocone's Spare-Parts or Servicing ?? Look no further.....

DHWANI INDUSTRIES is one of the leading Manufacturer & exporter for complete range of Genuine Quality Replacement Spare-Parts, suitable for **Autocone** (Model 138 / 238 / 338 / AC-5 / X-5 / AC-6) & **Mach Cone** (Model 7-II / 7-V / 21-C / QPRO Process Cone) winding machines in India. We are the first and only Company in winding machinery Spare-Parts business field, who has been accreditation with latest & prestigious "ISO 9001 : 2015" Certification. Our constant commitment to improvement of quality, development and our high standards in services, differentiate us from our competitors. Our long lasting and highly involved relationship with our customers, reflect their faith in our products and services. We strive to set very high industry standards in quality, product development and services. For more details about us, we request you to please visit our

Website : www.autoconerspares.in

We supply to most of all the reputed Ring Spinning Textile Mills in India. Our products are regularly exporting to more than 24 countries, mainly to Europe, Far East and Asian Countries.

Products

Efficient design, precision manufacturing, quality tested and competitively priced products, include complete range of spare-parts, with **AT PAR QUALITY** suitable for :

Autocone Model - 138
Autocone Model - 238
Autocone Model - 338
Autocone Model - AC-5 / X-5
Autocone Model - AC-6
Mach Cone Model 7-II
Mach Cone Model 7-V
Mach Cone Model 21-C
Mach Cone Model QPRO

Central Print Station

MIS Printers housed on each Autocone Model 238 (146-147) & AUTOCORO (O.E.) are highly vulnerable to the environment. Dust is the biggest enemy of these printers causing high maintenance for the printer head and very expensive metallic paper cost.

We have developed a system for replacing these printers by one centralized plain paper printer located away from the machine in a dust free room. This printer can be attached to maximum 8 such winding machine and can print reports from all these 8 machines. All you require is a cable connected to all these 8 machines, with central print station system and the central printer.

Please contact us for more details.

Services

• Repairing

PCB Repairing: All types of PCB's of Autocone & Machcone Winding Machines (All Models), Uster, Loepfe EYC Sensing head, Splicer Valve-3/2", Solenoid Valve, all types of Sensors and other Electronic spares, from Ex-O.E.M. trained engineers.

Scissors Blade Sharpening: All type of H.S.S., Carbide tips and Ceramic Cutters of Autocone and Mach Cone Machines for all Models.

• Servicing & Overhauling

Shifting, Erection, Installation, Overhauling & Servicing of Autocone, Mach Cone and Process Cone Winding Machines, from Ex-O.E.M. trained engineer.

• Customised Product development

We can design, develop and manufacture customized spares as per customer requirements for bulk quantity.

• Other Services

We undertake buying and selling of old / used Winding machines.

Autocone Model - 238



20203 - 45
WASHER



20235 - 44
FILTER SCREEN



20235 - 145
THROTTLE FLAP



27050 - 04
MAGAZINE CARRIER



27050 - 09
MAGAZINE HALF



27050 - 13
MAGAZINE HALF



30107 - 02
CPL. SWITCH HOUSING



30107 - 03
SWIVELLING HOOD



30107 - 12
COVER



30120 - 12
PISTON



30120 - 901
CRADLE SHOCK ABSORBER



30380 - 15
DEFLECTION PLATE



30380 - 17
DEFLECTION PLATE



31601 - 03
GUIDE BAR (UPPER)



31601 - 04
GUIDE BAR (LOWER)



32501 - 31
SWIVEL BOLT



32501 - 33
PIVOTING SLEEVE



32501 - 42
CAM PIECE (MODIFY)



32510 - 34
OPENER ARM



33001 - 14
PILOT MOTOR GEAR



33001 - 14
PILOT MOTOR SHAFT



33001 - 14
PILOT MOTOR WORM



33005 - 34
TOOTHED SEGMENT



33010 - 13
CAM DISK
(FU 2.1)



33010 - 66
CAM FOLLOWER
(FU2)



33015 - 13
SUCTION TUBE
(UN-BREAKABLE)



33020 - 09
COMB STRIP (0.3 & 0.5)



33045 - 09
SCISSORS HOUSING



33045 - 14
SCISSORS SHAFT



33045 - 16
COVER

Autocone Model - 238



33045 - 19
SCISSORS BLADE
(CARBIDE TIPS & HSS)



33045 - 20
SCISSORS BLADE
(CARBIDE TIPS & HSS)



34101 - 03
CYLINDER



34101 - 07
FASTENING PIECE



34101 - 08
GUIDE BUSH



34101 - 14
BEARING SHAFT



34101 - 17
BRAKE BUSH



34101 - 37
CPL BRAKE RING



34101 - 37
PILE WHEEL
FOR BRAKE RING



34101 - 68
HOLDING RING (STEEL)
(ALL SIZES)



34101 - 77
HOLDING RING (PU)
(ALL SIZES)



34201 - 10
BEARING (51107X)



34201 - 17
CPL ADOPTER (LH)



35101 - 21
LATCH



35101 - 81
STATIONARY SHEAR BLADE
(CARBIDE TIPS & HSS)



35101 - 84
PIVOTING SHEAR BLADE
(CARBIDE TIPS & HSS)



35101 - 96
TOOTHED SEGMENT



35101 - 113
TOOTHED SEGMENT



35101 - 208
LEVER



35101 - 211
CONTROL BOLT



35201 - 40
BOBBIN PEG



35301 - 12
IC MODULE (DRIVE)



35301 - 104
TRANSFER ROD



35301 - 133
GUIDE WIRE



37201 - 10
CONTROL LEVER



37701 - 20
LID BEARING



37701 - 20
SPACER RING



37701 - 67
SWIVEL LID (REGULAR)



37701 - 67
SWIVEL LID (UNBREAKABLE)



37701 - 75
CONTROL LEVER

Autocone Model - 238



40101 - 33
TENSION DISC



40101 - 55
TOOTHED WHEEL



40105 - 10
HOLLOW SHAFT



40105 - 19
TENSION DISC



40105 - 66
GUIDE PLATE



40160 - 05
ACTUATING LEVER



40160 - 44
STATIONARY SHEAR BLADE
(CARBIDE TIPS & HSS)



40160 - 50
PIVOTING SHEAR BLADE
(CARBIDE TIPS & HSS)



41001 - 03
SUPPORT ANGLE



41001 - 34
ACTUATING FORK



41001 - 41
DOUBLE LEVER



41501 - 92
MAGNET



41501 - 102
CUTTING KNIFE



42001 - 15
DRIVE SHAFT



42001 - 19
COUPLING GEAR



42001 - 47
GUIDE PLATE



42001 - 97
WAX SHAFT



42001 - 104
WAX CARRIER



42001 - 107
YARN TRAP



42001 - 902
CPL. WAXER SOCKET



42001 - 903
CPL. LIFTING PLUNGER



42030 - 09
TOOTHED WHEEL



42030 - 14
BEARING SHAFT



42035 - 08
TOOTHED SEGMENT



42501 - 37
NOZZLE (SMALL)



42501 - 46
NOZZLE (BIG)



56801 - 70
TOOTHED SEGMENT



56801 - 98
PINION



56801 - 202
AIR DUCT



56801 - 210
CPL. SCISSORS PLATE

Autocone Model - 238



56801 - 225
SCISSORS BLADE
(CARBIDE TIPS & HSS)



56801 - 230
SCISSORS BLADE
(CARBIDE TIPS & HSS)



56801 - 310
COVER (13 & 16 MM)



56801 - 357
DISTRIBUTOR



56801 - 433
COUPLING HALF



61001 -09
NYLON GEAR 19T



61001 - 17
BEARING CAP



61001 - 26
SHAFT



61001 - 31
CPL. ROLLER



63020 - 03
LEVER WITH MAGNET



65101 - 04
SHAFT



65101 - 35
COVER



75203 - 04
BELT SHIFTER (BRACKET)



80590 - 17
BOBBIN (FOOT)
(CADDY BASE)



80590 - 30
BOBBIN CARRIER
(18-21 & 20-23)



80590 - 30
BOBBIN CARRIER
(22-25 & 24-28)



81250 - 145
SUPPORTING DISC



81250 - 146
DRIVE BUSH



81250 - 451
SUPPORTING RING



81560 - 20
CENTERING



85035 - 44
SCISSORS BLADE
(CARBIDE TIPS & HSS)



85050 - 116
TOOTHED LOCK WASHER



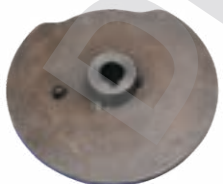
85050 - 117
TOOTHED LOCK WASHER



85050 - 125
TOOTHED LOCK WASHER



85530 - 18
PINION SHAFT



85530 - 140
CAM



85530 - 152
CAM



99910 - 46
PULLER DEVICE



99910 - 65
STRIPPING POT



F 208897
CAM ROLLER BEARING

Autocone Model - 338



20230 - 77
CPL. CYLINDER



20230 - 105
FILTER SCREEN



20230 - 113
COVER



20230 - 120
WINDOW



22010 - 32
SLEEVE



22010 - 38
LOCKING



22010 - 40
TUBULAR LOCK



22010 - 42
SOCKET



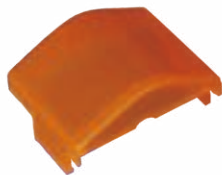
27070 - 07
PLATE



27251 - 07
MOUNTING
WHEEL



27251 - 60
REVERSING DEVICE



30105 - 06
COVER



30107 - 04
SLIDER (NEW COLOUR)



30107 - 04
SLIDER (OLD COLOUR)



30110 - 06
COVER



30115 - 11
TOOTHED SEGMENT
(NEW DESIGN)



30115 - 11
TOOTHED SEGMENT
(OLD DESIGN)



30120 - 06
MAGNETIC COIL



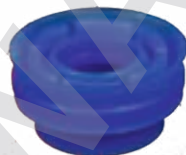
30120 - 11
COVER



30120 - 14
UNIVERSAL JOINT



30120 - 22
SEAL RING



30120 - 23
PISTON



30125 - 05
CLAMPING LEVER



30125 - 31
CLAMPING LEVER



30125 - 35
STOP LEVER



30130 - 06
COMPENSATING LEVER



30301 - 04
MOTOR HOUSING



30301 - 04
MOTOR HOUSING PCB
WITH SIDE COVERS



30301 - 18
LOCKING LID



31320 - 09
LEVER

Autocone Model - 338



32510 - 22
LEVER



32510 - 45
CRADLE ARM BUSH (MODIFY)



32530 - 01
CPL.ADOPTER (RH)



32530 - 08
GUIDE BUSH



32530 - 14
BEARING SHAFT



32530 - 17
BRAKE BUSH



32530 - 18
FASTENING PIECE(MODIFY)



32530 - 20
BRAKE LINING



32530 - 30
PILE WHEEL



32530 - 36
BRAKE RING



32530 - 70
HOLDING RING (STEEL)
(ALL SIZES)



32530 - 70
HOLDING RING (PU)
(ALL SIZES)



32535 - 10
CAP



32535 - 18
BEARING (51107X)



33001 - 14
COVER FOR VALVE



33001 - 60
CPL.GEAR BOX ASSLY.
(MODIFY DESIGN)



33001 - 60
GEAR BOX COVER
(MODIFY DESIGN)



33001 - 61
GEAR BOX COVER
(OLD DESIGN)



33001 - 62
TOOTHED WHEEL
(Z 80 X 12)



33001 - 64
TOOTHED WHEEL
(Z 86 X 12)



33001 - 64
TOOTHED WHEEL (STEEL)
(Z 86 X 12)



33001 - 65
GEAR HOUSING



33001 - 68
SHAFT



33001 - 69
TOOTHED WHEEL (Z-22)



33001 - 88
VALVE



33010 - 06
CAM SHAFT



33010 - 08 & 11
CPL. CAM WITH
TOOTHED WHEEL



33010 - 09
MAGNET HOLDER



33010 - 12
CAM



33010 - 13
SWITCH CAM

Autocone Model - 338



33010 - 15
SPACER WASHER



33010 - 18
CAM FOLLOWER



33010 - 35
TOOTHED SEGMENT



33010 - 43
TOOTHED SEGMENT



33020 - 04
SUCTION TUBE



33020 - 06
CLIP



33020 - 07
CLAMPING PIECE



33020 - 09
SUCTION NOZZLE



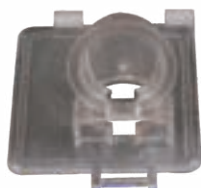
33045 - 05
SHUTTER HOUSING



33045 - 08
BOLT



33045 - 10
LEVER



33045 - 15
SUCTION CONNECTION



33045 - 16
SNAP LOCK



33045 - 36
PULL ROD



33045 - 38
SENSOR BRACKET



33050 - 11
SUCTION PIPE SHUTTER



33050 - 22
PINION



33050 - 35
SUCTION DUCT



36001 - 62
TOOTHED WHEEL
(NEW DESIGN)



36001 - 62
TOOTHED WHEEL
FOR STEP MOTOR



36001 - 74
TENSION DISC
(NEW DESIGN)



36001 - 74
TENSION DISC
(OLD DESIGN)



36001 - 74
WORM FOR
TENSION DISC



36001 - 81
TOOTHED WHEEL
(NEW DESIGN)



36001 - 81
TOOTHED WHEEL (Z-31)
(OLD DESIGN)



36001 - 105
ACTUATING LEVER



36001 - 165
RUBBER SLEEVE



36010 - 11
CARRIER
WITH MAGNET



36010 - 122
INTERMEDIATE PIECE



36010 - 141
TENSION DISC
(NEW DESIGN)

Autocone Model - 338



36010 - 141
TENSION DISC
(OLD DESIGN)



36010 - 162
BLOWER NOZZLE



36060 - 32
SWIVEL LEVER



36060 - 78
ACTUATING CAM



36301 - 09
GUIDE PLATE



36301 - 18
YARN TRAP



36301 - 31
BLOWER NOZZLE



36301 - 52
LEVER



36301 - 64
DRIVE SHAFT



36301 - 66
NOTCHED DISK



36301 - 68
LIFTER ARM



36301 - 70
LIFTING PLUNGER



36301 - 144
WAX SHAFT



36401 - 05
BRACKET



36401 - 22
INTERMEDIATE PIECE



36401 - 65
YARN LOCK



36405 - 05
SLUB CATCHER HOLDER
(USTER)



36405 - 55
SLUB CATCHER HOLDER
(LOEPFE)



36801 - 57
CAM FOLLOWER



36801 - 92
EXHAUST CHANNEL



36801 - 97
PULL ROD



36801 - 109
PULL ROD



36801 - 116
LEVER



36801 - 125
LEAF SPRING



36801 - 155
WORM WHEEL



36801 - 203
SLEEVE



36801 - 277
ADAPTER PLATE



36801 - 460
PRISM (ALL SIZE)



37701 - 38
BEVEL GEAR



37701 - 43
DRIVE LEVER

Autocone Model - 338



37701 - 69
MALTESE CROSS



37701 - 92
LID BEARING



37701 - 104
SWIVEL LID



37710 - 33
TOOTHED WHEEL
(Z=14/Z=56)



37710 - 131
SENSOR BRACKET



37730 - 02
TOOTHED WHEEL
(Z=72)



37740 - 11
DOUBLE LEVER



37740 - 23
TRANSFER ROD



37760 - 04
HOUSING COMPLETE



37760 - 08
CONTROL LEVER



37760 - 11
ELECTROMAGNET



50190 - 09
CHAIN LINK



52020 - 07
CAM SHAFT WITH KEY



52020 - 20
CAM



52020 - 25
CAM



52030 - 01
CAM FOLLOWER



52030 - 31
CAM FOLLOWER



52030 - 35
UNIVERSAL JOINT



52030 - 57
TOOTHED SEGMENT



52030 - 61
DRAW SPRING



52030 - 134
CYLINDER



52030 - 140
LEAF SPRING



52030 - 15
SCISSORS
SUPPORT



52120 - 01
CAM FOLLOWER



52140-06
DRIVE WHEEL



52140 - 18
DRIVE ARM



52150 - 51
LEVER



52150 - 62
FINGER



52150 - 82
SUPPORTING PLATE



78010 - 49
FOOT (CADDY BASE)

Autocone Model - AC-5 / X-5



22015 - 32
SLEEVE



22015 - 36
LOCKING



22015 - 40
ANGULAR
CONNECTING



22015 - 42
GROMMET



27251 - 07
MOUNTING WHEEL



27251 - 97
FILTER SCREEN



30105 - 01
HOUSING



30105 - 10
COVER



30107 - 01
LAMP CAP



30107 - 05
CAP



30110 - 05
DISPLACEMENT
COVER (MODIFY)



30115 - 15
TOOTHED SEGMENT



30120 - 11
COVER



30120 - 12
CYLINDER



30120 - 30
PISTON WITH BUSH



30132 - 38
TOOTHED WHEEL



30140 - 02
TOOTHED WHEEL
FOR SUCTION
ARM DRIVE



30301 - 03
MOTOR
HOUSING



30301 - 03
MOTOR HOUSING PCB
WITH CABLE AND
CONNECTOR



30301 - 10
DOWEL



30301-16
DRUM SHAFT



30380 - 15
DEFLECTION PLATE



30380 - 17
DEFLECTION PLATE



32511 - 18
CYLINDER



32511 - 25
GUIDE BUSH



32511 - 29
BEARING SHAFT



32511 - 31
SCREW BOLT



32511 - 37
BRAKE BUSH



32511 - 38
BRAKE LINING



32511 - 39
MAGNET WHEEL

Autocone Model - AC-5 / X-5



32511 - 40
BRAKE RING



32530 - 91
HOLDING RING
(ALL SIZE)



32530 - 92
CLUTCH RING



32535 - 86
COMPLETE ADAPTER
(L. H.)



33001 - 21
VALVE
(BLACK)



33020 - 04
SUCTION TUBE



33045 - 08
BOLT



33045 - 34
GASKET



33045 - 39
SEAL



33055 - 01
LEVER FOR SUCTION
ARM SHUTTER



36010 - 04
TENSIONING
SECTION CPL.



36010 - 182
BLOWER NOZZLE



36020 - 23
BLOWER NOZZLE



36020 - 64
TOOTHED WHEEL
(NEW DESIGN)



36110 - 01
SUPPORTING
ARM



36110 - 06
CYLINDER



36110 - 08
BUTTERFLY LEVER



36110 - 11
ACTUATING CAM



36110 - 12
OPERATING
LEVER



36111 - 09
LEVER



36111 - 25
SCISSORS
ACTUATING LEVER



36301 - 01
COMPONENT
CARRIER



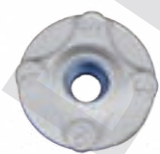
36301 - 21
COVER



36301 - 142
BRACKET



36301 - 600
NOZZLE



36320 - 14
LIMIT STOP



36320 - 20
WAX SHAFT
COMPLETE



36320 - 24
THRUST WASHER



36401 - 35
INTERMEDIATE
PIECE



36802 - 70
ADAPTER SLEEVE

Autocone Model - AC-5 / X-5



36802 - 76
BRACKET



36802 - 82
COVER



36803 - 28
FEEDER LEVER
MAGNET



36803 - 36
CPL. LID
LEVER



36803 - 36
LID LEVER
ONLY



36803 - 38
STRAP



37720 - 16
DRIVE SHAFT



37720 - 16
DRIVE SHAFT-
BOTTOM - 12 T



37720 - 20
CAM FOLLOWER



37720 - 28
CHUTE LEVER



37720 - 37
DRIVE PINION



37720 - 41
FEEDER ARM



37720 - 43
SWIVELLING
LEVER



37720 - 45
BEARING BUSH



37720 - 47
MALTESE
CROSS



37720 - 49
INDEXING PLATE



37720 - 50 & 51
BEARING SHELL
WITH AXLE



37720 - 62
TOOTHED
SEGMENT



37720 - 63
FEEDER ARM



37720 - 64
FEEDER ARM



37720 - 70
STRAP



37720 - 72
STRAP



37720 - 107
BEVEL GEAR



37720 - 108
CAM DISK



37720 - 109
CAM DISK



37720 - 120
CAM DISK



37720 - 124
CPL. SLIDE
CURVE LEVER



37720 - 124
SLIDE CURVE
LEVER ONLY



37720 - 130
EJECTOR



37720 - 131
EJECTION PLATE

Autocone Model - AC-5 / X-5



37720 - 134
HOUSING COVER



37720 - 135
TENSION CLAW



37720 - 136
TENSION CLAW



37720 - 137
CREEL ADAPTOR



37720 - 138
CREEL ADAPTOR



37720 - 142
CLAMP



37720 - 143
COUPLING ROD



37720 - 144
LIMIT STOP



37720 - 147
SLIDE CURVE
LEVER



37720 - 153
OPENER ARM



37720 - 154
SLIDE CURVE
LEVER (NEW)



37720 - 160
COUPLING ROD



37720 - 162
SIDE PANEL



37720 - 171
CENTERING
DOORS BRACKET



37720 - 173
TOP PART OF
CENTERING - L. H.



37720 - 179
TOP PART OF
CENTERING - R. H.



37720 - 220
PIPE HOLDER



37720 - 234
TUBE ARBOT



37720 - 237
ANTI LAP
DEVICE



37720 - 239
EJECTOR STOP



37720 - 247
HOOD



37720 - 252
CONNECTING
STRAP



37756 - 13
CYLINDER



37820 - 01
HOUSING
(SNARL BRAKE)



37820 - 05
CONTROL LEVER



50191 - 03
CHAIN LINK



52150 - 80
RETAINER PLATE



78010 - 39
MAGNET
BRACKET



78010 - 49
BOBBIN CARRIER
(ALL SIZES)



78020 - 48
BOBBIN CARRIER
(FOOT)

Autocone Model - AC-6



11020 - 30
BRUSH



21010 - 105
SLEEVE



21010 - 601
CYLINDER



22010 - 32
SLEEVE



22010 - 38
LOCKING



22010 - 40
ANGULAR
CONNECTION



22010 - 42
GROMMET



25110 - 05
REVERSING
SWITCH



25110 - 23
PULLEY



25120 - 23
PULLEY



30020 - 01
HOUSING &
PUSH BUTTON



30020 - 50
CPL. OPERATION
UNIT



30030 - 01
BLIND



30030 - 04
SEALING CAP



30030 - 05
CAP



30050 - 15
TOOTHED
SEGMENT



30060 - 05
CRADLE SHOCK
ABSORBER



30060 - 06
MAGNETIC COIL
WITH PLUNGER



30060 - 11
COVER



30060 - 14
JOINTED HEAD



30060 - 30
PISTON



30080 - 06
COMPENSATING
LEVER



30100 - 02
TOOTHED
WHEEL FOR
SUCTION ARM DRIVE



30310 - 03
STATOR



30310 - 03
STATOR PCB WITH
CABLE AND
CONNECTOR



30310 - 16
DRUM SHAFT



30340 - 05
PLUG WITH
DRUM BUSH



32010 - 21
VALVE BLOCK



32020 - 01
SUCTION PIPE



32030 - 38
SENSOR BRACKET

Autocone Model - AC-6



32030 - 39
SEAL



32050 - 13
YARN TRAP



33010 - 25
GUIDE BUSHING



33010 - 37
BRAKE BUSH



33010 - 38
BRAKE LINING



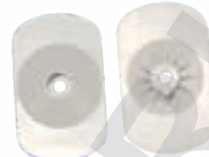
33010 - 40
BRAKE RING



33020 - 70
HOLDING RING
(5-57' CONE SIZE)



33020 - 91
HOLDING RING
(4-20' CONE)



33030 - 10
COVER



33030 - 17
HOLDING BUSH



33030 - 23
ROUND
CORD RING



33030 - 31
HUB



33110 - 10
TENSION DISC



33110 - 14
TENSIONING
SECTION CPL.



33110 - 21
BLOWING
NOZZLE



33110 - 74
TENSION DISC



33110 - 122
INTERMEDIATE
PIECE



33130 - 41
ACTUATING CAM



33230 - 25 & 27
LIMIT STOP



33230 - 31
WAX SHAFT



33230 - 36
THRUST
WASHER



33230 - 88
BUSHING



33230 - 89
HOSE



33410 - 37
SENSOR BRACKET



33510 - 36
LID LEVER



33510 - 82
COVER



33510 - 321
DISTRIBUTOR



33511 - 20
SCISSORS
STRAP



33511 - 21
SCISSORS
STRAP



33530 - 530
HOSE

Autocone Model - AC-6



33530 - 540
HOSE



33540 - 280
COVER (13 & 16 MM)



33540 - 310
RETAINER TUBE
(SAW TOOTH)



33540 - 325
SUPPORTING
SHEET METAL



33540 - 460
PRISM
(ALL TYPES)



33540 - 541
BRAKE PLATE



34010 - 02
THREADING
PLATE



34010 - 03
GUIDE ARM



34010 - 09
CYLINDER



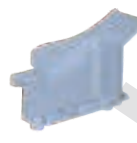
34010 - 16
SCISSORS
ACTUATING LEVER



34010 - 17
STATIONARY
SHEAR BLADE
(H. S. S.)



34010 - 19
PIVOTING
SHEAR BLADE
(H. S. S.)



34010 - 22
ACTUATING CAM



34010 - 32
STRAP



34010 - 43
TUBE ARBOT



34010 - 62
LID BEARING



34010 - 67
SWIVEL LID



34030 - 122
BOBBIN PEG



34030 - 138
EJECTOR



34030 - 146
SLEEVE



34030 - 24
BEARING BUSH



34030 - 25
MALTESE CROSS



34310 - 03
SUPPORTING
ARM



34340 - 01
HOUSING
SNARL BRAKE



40010 - 35
COVER



74030 - 16
ANGULAR
CONNECTING



74060 - 53
FRICTION LAYER
(BIG)



74060 - 54
FRICTION LAYER
(SMALL)



75010 - 49
BOBBIN CARRIER
FOOT



75010 - 52
BOBBIN
CARRIER
(ALL SIZES)

Autocone (Electronics Spares)



16160 - 01 (148)
INFORMATOR
TOUCH SCREEN



16161 - 02 (147)
INFORMATOR
KEYPAD



16161 - 02 (147)
INFORMATOR
DISPLAY (FRONT)



16161 - 02 (147)
INFORMATOR
DISPLAY (BACK)



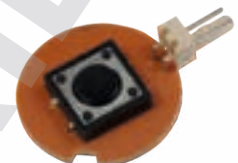
17550 - 162 (146)
INFORMATOR
KEYPAD



30105 - 01
CPL. OPERATION
SECTION



30105 - 901
CPL. INDICATOR UNIT



30107 - 13
CIRCUIT BOARD



30301 - 19
SENSOR
FOR DRUM SHAFT



31635 - 40
S6 SENSOR



31635 - 41
S7 & S8 COMBINED
SENSOR



31635 - 41
COVER FOR S7 &
S8 SENSOR



32530 - 35
SENSOR



33101 - 15
SPLICER VALVE
REPAIRING KIT



34101 - 35
S4 SENSOR



34101 - 35
S4 SENSOR (MODIFY)



36201 - 41
SENSOR - YARN TENSION
(FX SERIES)



42035 - 10
ELECTRO MAGNET (24V)



65230 - 70
INITIATOR (ALL TYPES)



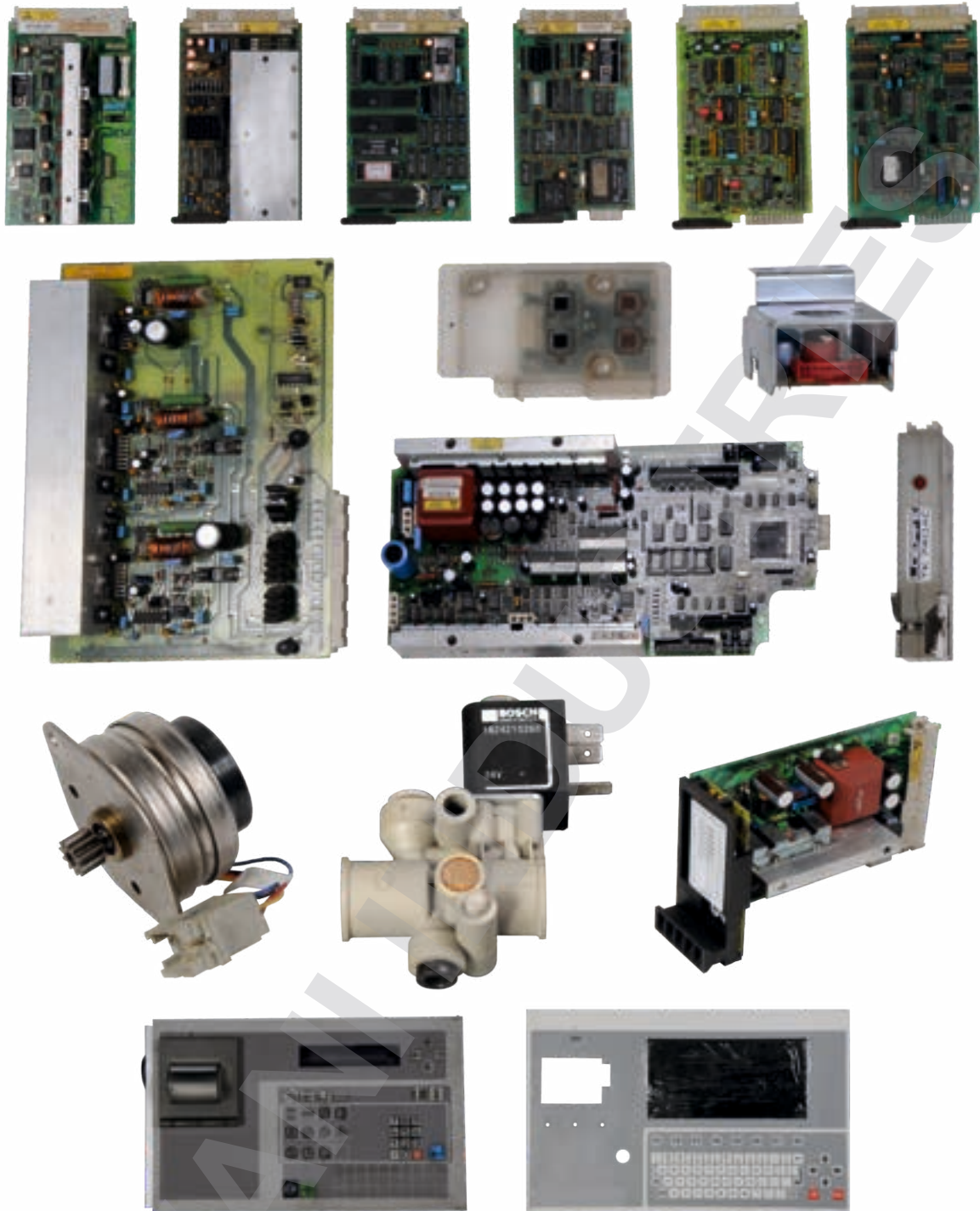
34101 - 35
S4 SENSOR
(ROUND CABLE)



GZK WIRING
FOR 238 (146)

**PLEASE INQUIRE FOR OTHER ELECTRONIC SPARES
OTHER THAN ABOVE PHOTOGRAPHS,
FOR WINDING MACHINES.**

PCB Repairing & Cutting Knife



WE CAN REPAIR ALL-MOST ALL ELECTRONIC SPARES & PCBs FOR WINDING MACHINES.
PLEASE INQUIRE FOR FURTHER DETAILS.



ALL TYPES OF CUTTING KNIFE FOR E.Y.C.

Mach Cone Model 7-II & 7-V



003-41B-003
SET PIECE



003-41B-009
HANDLE STUD



003-41B-013
BUSH (NEW)



003-41B-013
CRADLE BUSH



003-41B-034
LEVER



003-41B-034
LEVER
(MODIFIED)



003-41B-035
INCREASE
ROD BOLT



003-42A-011
NEEDLE BEARING



003-42A-015
BRAKE HOLDER



003-42A-019
BUNCH GUIDE
(NEW DESIGN)



003-42A-019
BUNCH GUIDE
(OLD DESIGN)



003-42A-023
BEARING
CENTER



003-42A-032
CPL. BEARING
CENTER WITH CAP



003-42A-032
BEARING CENTER
COMPLETE



003-42A-038
BRAKE SHOE



003-42J-016
BUSH



003-422-001
SLEEVE



003-471-013X
CAP



003-471-020
OIL DAMPER



003-601C-001
BUSH



003-601C-003
YARN TRAP



003-601C-004
YARN TRAP HOLDER



003-602-002X
LEVER



003-602-004
TENSOR BASE



003-604-008
SHAFT (WAXING)



003-604-009
LIFTING PLATE



008-170A-002
STOPPER



008-220-008
ROLLER



008-300-009
CASE COVER



008-300-052
LAMP & HOLDER CPL.

Mach Cone Model 7-II & 7-V



008-310-001
SHAFT
(FRICTION CLUTCH)



008-310-004
BUSH



008-310-011
SET BRACKET
(R. H.)



008-310-013
SET BRACKET
(L. H.)



008-310-018
LEVER



008-310-022
PLATE



008-310-024
SHAFT



008-330-001
DRUM STAY SHAFT



008-330-007
DRUM BELT
(ROUND)



008-330-025X
BRAKE LEVER



008-330-028X
BRAKE SHOE (OLD)



008-330-028X
BRAKE SHOE (NEW)



008-330-033X
SHAFT (DRUM)



008-330-036
DRUM COVER



008-330-037
PROTECTOR



008-330-040
BRUSH (DRUM)



008-331-006X
DRUM PULLEY COMPLETE



008-350-007X
DUCT (SUCTION)



008-350-010
COMB



008-350-022
TAPE



008-360-002
HOLDER (CLAMP)



008-360-002X
CPL. CLAMP
HOLDER



008-360-008
COVER (CLAMP)



008-360-027
CAM
(RETIE PIPE OPENER)



008-360-034
YARN GUIDE



008-360-044
CAP



008-370-003
COVER



008-370-005
SHUTTER CUTTER



008-370-006
CUTTER



008-370-011
CUTTER LEVER

Mach Cone Model 7-II & 7-V



008-370-012
CAP



008-370-016X
SHUTTER CASE



008-380-001
RETIE CAM
LEVER SHAFT



008-380-003X
GEAR
(RETIE PIPE SEGMENT)



008-380-013X
LEVER - A3
(MEMORY CAM)



008-380-020
CAM



008-380-021
REVERSING
ROLL CAM



008-380-024
MEMORY CAM



008-380-026
DRUM START CAM



008-380-032
BRAKE CAM



008-380-038X
GEAR (MOUTH SEGMENT)



008-380-040
BUSH



008-380-043X
LEVER
(SHUTTER CUTTER CAM)



008-380-059
ROLLER



008-390-003
MO-GEAR
(DRIVE)



008-390-004X
CLUTCH (CAM)



008-410-058
BUNCH GUIDE



008-41A-030
LEVER



008-41A-030
LEVER (MODIFIED)



008-45B-017
CAM (S1)



008-45B-022
CAM S2



008-45B-047
CAM (S8)



008-45B-059
BUSH



008-45B-062
GUIDE
FOR S10 LEVER



008-45B-062X
LEVER S10
WITH GUIDE



008-45B-063
SCREW
(AIR ADJUSTING)



008-45B-064
SHAFT
(CAM LEVER)



008-45B-065
SPRING
(CAM LEVER) S9



008-45B-067
S10 CAM
(SPLICING BLAST)



008-45B-081
HOSE ADAPTOR

Mach Cone Model 7-II & 7-V



008-480-006
NOZZLE PIPE
(ALL SIZES)



008-480-012
LEVER



008-480-013
LEVER
(ALL TYPES)



008-480-022
CPL. LEVER
(STOPPER)



008-480-026X
LEVER - INTERMEDIATE



008-480-045
CLAMP SPACER



008-480-062
AIR GUIDE



008-480-081
CUTTER (FIXED)



008-480-082
CUTTER (MOVABLE)



008-480-087
SPRING (CUTTER)



008-480-089
PLATE (FRONT)



008-480-097
YARN GUIDE
FOR NOZZLE SPLICING



008-50A-002X
HEAD PUSHING



008-50A-008
CAN (MAGAZINE)
06 POCKETS



008-50A-008A
RATCHET WHEEL



008-50A-010
BASE MAGAZINE



008-50A-028X
BRACKET (MAGAZINE)



008-50A-030
COVER



008-50A-032X
PIPE
(MAGAZINE SUCTION)



008-50B-022
LEVER
(MAGAZINE DRIVE)



008-501-006
JOINT (HOSE)



008-502-001
ROD
(CONNECTING)



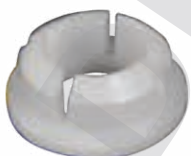
008-502-002
ROD (CONNECTING)



008-502-006X
HOUSING GEAR



008-502-013X
GEAR SEGMENT



008-52A-004
BUSHING



008-52A-015
TRAP DOOR (LH)



008-52A-018
TRAP DOOR (RH)



008-530-013X
EJECTOR (BOBBIN)



008-552-002
PULL BUTTON
WITH SIGNAL PIECE

Mach Cone Model 7-II & 7-V



008-552-004
CPL. PULL BUTTON
HOLDER



008-553-004
WHEEL (MEMORY
RATCHET)



008-553-006
PIN
(MEMORY RATCH)



008-553-016
RATCHET WHEEL
RETURN SPRING



008-553-047 & 048
CPL. ARM FEELER



008-553-062
DRUM SENSOR
BRACKET



008-570-005
DRIVE GEAR (KO)



008-570-006X
CLUTCH (CAM)



008-570-013
REVERSING ROLL



008-570-014
CAM SHAFT



008-570A-006
CLUTCH (CAM)



008-580B-031
GUIDE



008-601-006
PACKING
(YARN TRAP)



008-601B-006
YARN TRAP BUSH



008-601B-008
YARN TRAP
SHUTTER



008-601B-034
BLAST NOZZLE



008-602-007X
MOTOR (TENSER)



008-602-016
TENSER DISK



008-602-017
TENSER DISK
(NEW DESIGN)



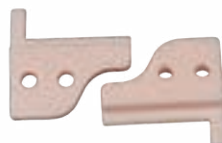
008-602-017
TENSER DISK
(OLD DESIGN)



008-603-007
CUTTER(MOVABLE)



008-603-008
CUTTER (FIXED)



008-603A-037
YARN GUIDE
(TENSER)



008-604-004X
LEVER
(WAX PUSH)



008-604-008
WAXING SHAFT



008-604-026
YARN GUIDE



008-604-029
BRACKET
(WAXING)



008-604-044
GEAR (SPUR)



008-604-045
YARN GUIDE



008-E30-018
SENSOR

Mach Cone Model 21-C



21A-200-034
BRUSH



21A-300-008
COVER



21A-310-017
PANEL



21A-350-001
DRUM ASSLY.



21A-360-009
PLATE



21A-370-013
MOUTH COMPLETE



21A-370-013A
MOUTH (ELBOW)



21A-370-018
COMB



21A-370-019
PAD



21A-377-001
BLOCK



21A-377-004
STOPPER



21A-380-009
CPL. HOLDER



21A-380-011
DISK



21A-380-014
COVER



21A-380-015
SPRING



21A-380-020
CAM (OPENER)



21A-390-004
GEAR (DO)
ASSEMBLY



21A-390-010
SHAFT



21A-390-013
GEAR (AO)
ASSEMBLY



21A-390-016
GEAR (SEGMENT)
ASSEMBLY



21A-390-019
CYLINDER



21A-390-020
PISTON



21A-390-040
PLATE



21A-410-013 & 014
HANDLE WITH KNOB



21A-410-013
HANDLE



21A-410-014
KNOB



21A-410-016
BUSH



21A-410-017
HANDLE STUD



21A-410-018
SPACER



21A-410-026
SET PIECE

Mach Cone Model 21-C



21A-410-029
STOPPER



21A-410-030
BRUSH



21A-410-036
WASHER



21A-410-037
RING



21A-410-040
COVER



21A-411-005
BUSH



21A-420-001
SLEEVE



21A-422-001
BEARING
CENTER CPL.



21A-422-003
BUSH



21A-422-008
BEARING CENTER



21A-422-009
BRAKE SHOE
(06 & 08 M.M.)



21A-422-010
HOLDER



21A-422-012
SEAL (DUST)



21A-422-014
WASHER



21A-422-015
SPRING



21A-422-016
BUSH



21A-422-017
HOLDER BEARING



21A-422-019
PACKING



21A-422-020
SPACER



21A-422-021
HOLDER



21A-422-100
CPL. BEARING
CENTER



21A-422-101
CPL. HOLDER BEARING



21A-426-001
BEARING CENTER
(NEW DESIGN)



21A-426-001
BEARING
CENTER



21A-426-002
HOUSING
(BEARING)



21A-426-003
SHAFT



21A-426-006
MAGNET



21A-426-100
CPL. BEARING
CENTER (L.H.)



21A-440-003
PACKING



21A-440-004
SHAFT

Mach Cone Model 21-C



21A-440-006
CYLINDER



21A-440-021
BOLT



21A-440-024
JOINT (ELBOW)



21A-440-025
JOINT (ELBOW)



21A-460-004
HOLDER (SWITCH)



21A-460-007
COVER (NUT)



21A-460-010
UNIT SWITCH
COMPLETE



21A-470-002
FRAME (L)



21A-470-003
SHAFT



21A-470-006
COLLAR



21A-470-029
COVER



21A-480-008
LEVER ASSEMBLY



21A-480-010
LEVER



21A-480-012
LEVER ASSEMBLY



21A-480-021
HOLDER (SPRING)



21A-480-028
STUD (CUTTER)



21A-480-031
SPRING (PLATE)



21A-480-032
LEVER (CUTTER)



21A-480-041
LEVER ASSEMBLY



21A-480-043
LEVER



21A-480-046
YARN HOLDING
LEVER (ALL TYPE)



21A-480-050
TWISTING NOZZLE
(G1/G2Z/G8Z/
GS & G3S)



21A-520A-031
GUIDE - CERAMIC



21A-520B-028
GUIDE



21A-520B-032
HOLDER



21A-520B-033
HOLDER



21A-520B-036
SPRING



21A-520B-039
SPRING



21A-540-003
GUIDE - CERAMIC



21A-540-004
GUIDE - CERAMIC

Mach Cone Model 21-C



21A-540-005
LEVER



21A-540-006
SLIDER



21A-540-007
SPRING



21A-540-015
LEVER



21A-540-016
LEVER



21A-540-017
GUIDE - CERAMIC



21A-540-018
LEVER



21A - 540 - 027
HOLDER



21A-540-029
GUIDE - CERAMIC



21A-540-030
GUIDE - CERAMIC



21A-560-007
PLATE



21A-560-010
JOINT



21A-560-013
GUIDE - CERAMIC



21A-560-057
SHAFT ASSEMBLY



21A-603B-007
LEVER



21A-603B-027
COLLAR



21A-603B-028
LEVER



21A-608H-008
MAGAZINE CAN
(09 POCKETS)



21A-608H-010
BASE ASSEMBLY



21A-608H-16,17,18
LEVER TRIP WITH
ROLLER & PIN



21A-608H-028
MAGAZINE
BRACKET



21A-608H-047
PIPE



21A-608H-048
BUSH



21A-608H-051
JOINT



21A-614A-005
SPRING (PLATE)



21A-614A-006
LEVER



21A-617B-003
STOPPER RUBBER



21A-617B-004
STOPPER RUBBER



21A-617B-007
GEAR



21A-620B-002
GEAR

Mach Cone Model 21-C



21A-620B-025
SPRING



21A-627-044
WIRE



21A-875-020
BRUSH HOLDER



21A-875A-021
SPRING



21A-875A-022
BRUSH



21A-878B-006
SHOVEL



21A-880A-011
PULLEY



21A-882A-023
GUIDE



21A-882A-024
GUIDE



21A-882A-044
SPACER



21A-882A-045
SHAFT



21A-992-005
HANDLE ASSEMBLY



21A-E01-024
PACKAGE SENSOR
ASSEMBLY



21D-150A-031
STOPPER



21D-250-023
JOINT



21D-400-019
HOSE



21D-401-001
BRACKET



21D-401-004
SHAFT



21D-401-005
CLAMP



21D-401-006
CUTTER



21D-401-007
SPRING



21D-401-009
LEVER



21D-401-012
BRACKET



21D-401-016
JOINT



21D-450-035
LEVER



21D-450-036
LEVER



21D-450-037
LEVER



21D-450-038
LEVER



21D-450-039
LEVER



21D-450-040
LEVER

QPRO PROCESS CONE



9C1-101-001
SOLENOID VALVE



9C1-120-001
DRUM ASSY



9C1-120-003
WHEEL



9C1-150-001
BEARING CENTER
(ALL SIZE)



9C1-150-002
BRAKE SHOE



9C1-150-003
HOLDER



9C1-150-006
HOLDER



9C1-150-009
BEARING



9C1-150-010
BEARING



9C1-150-100
BEARING CENTER



9C1-160-001
BEARING
CENTER
(ALL SIZE)



9C1-160-100
BEARING
CENTER



9C1-169-016
BRUSH



9C1-170-001
CRADLE



9C1-170-002
BRACKET



9C1-170-008
STUD



9C1-170-012
BRUSH



9C1-170-901
HANDLE ASSY



9C1-190-001
CYLINDER



9C1-190-002
PISTON



9C1-190-006
CYLINDER



9C1-190-019
BUSH



9C1-190-023
SOLENOID VALVE



9C1-190-100
CYLINDER
COMPLETE



9C1-250-003
PLATE



9C1-250-019
SHAFT



9C1-280-017
MOUTH



9C1-280-018
MOUTH



9C1-290-007
BOSS



9C1-300-003
HOLDER

QPRO PROCESS CONE



9C1-300-007
COVER



9C1-300-013
CAM



9C1-320-013
SHAFT



9C1-320-038
JOINT (S2)



9C1-320-073
PIPE



9C1-320-201
CUTTER ASSY
(CERAMIC)



9C1-320-203
NOZZLE ASSY



9C1-320-904
LEVER ASSY



9C1-320-906
LEVER ASSY



9C1-410-903
DAMPER ASSY



9C1-410-904
LEVER ASSEMBLY



9C1-410-906
LINK ASSY



9C1-485-019
BRACKET



9C1-485-020
HOLDER



9C1-500-014
CYLINDER



9C1-500-017
PISTON



9C1-505-009
LEVER ASSY



9C1-506-011
PISTON



9C1-510-005
HANDLE



9C1-510-015
SCREW



9C1-510-034
NUT
(OLD DESIGN)



9C1-510B-053/054
NUT ASSEMBLY
(NEW DESIGN)



9C1-515-004
COVER



9C1-515-005
COVER



9C1-515-006
COVER



9C1-515-901
HOLDER ASSY



9C1-516-022
NOZZLE



9C1-540-004
STOPPER



9C1-540-010
BRUSH



9C1-540-013
STOPPER

QPRO PROCESS CONE



9C1-560-008
BELT



9C1-560-040
SPRING



9C1-580-030
CLUTCH



9C1-610-903
RATCH
ASSEMBLY



9C1-610-904
RATCH
ASSEMBLY



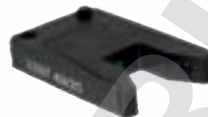
9C1-E01-001
DRUM MOTOR
FRONT SHAFT



9C1-E01-001
DRUM MOTOR
BACK COVER



9C1-E01-032
CABLE



9C1-E01-201
SENSOR



9C1-E01-212
SENSOR



9C1-E01-251
SENSOR



9CA-160-001
TRAY
(ALL SIZE)



9CA-250-009
FILTER



9CA-450-021
ROLLER



9CA-520A-022
BEARING UNIT



9CA-525A-005
CYLINDER



9CA-525B-005
AIR CYLINDER



9CA-650-002
BELT



9CA-690-006
CASTER



9CD-120-010
SUPPORT



9CD-120-015
GUIDE



9CD-300-016
AIR CYLINDER



9CD-400-001
CYLINDER



9CD-400-005
BRACKET



9CD-400-015
HOSE



9CD-400-021
BAND



9CD-401-009
STOPPER



9CD-410-004
SHAFT ASSY



9CD-410-012
BRACKET



9CD-410-013
BRACKET

QPRO PROCESS CONE



9CD-450-010
LEVER
ASSEMBLY



9CD-500-004
LEVER
ASSEMBLY



9CD-600-003
STOPPER



9CF-150-027
HOLDER



9CF-150-061
BRACKET



9CF-153-060
BRACKET



9CF-153-061
BRACKET



9CF-252A-901
AIR CYLINDER



9CF-252B-001
LEVER ASSEMBLY



9CF-253A-004
LEVER



9CF-270-001
BRACKET



9CF-271-012
BRUSH



9CF-410-003
LEVER



9CF-410-004
BRACKET



9CF-410-006
BRACKET



9CF-410-014
HOLDER



9CF-410-020
BALL SPINE



9CF-410-028
AIR CYLINDER



9CF-410-032
NOZZLE



9CF-410-033
JOINT



9CF-420-001
AIR CYLINDER



9CF-430-013 & 014
CUTTER



9CF-431-015
VALVE



9CF-432-005
SHEET



9CF-432-006
LEVER



9CF-432-021
ROLLER



9CF-433-003
GUIDE



9CF-433-004
PLATE



9CF-450-901 004 005
ROLLER ASSEMBLY
HUB ROLLER



9CF-500-041
BRUSH

COMPANY PHILOSOPHY

“A customer is the most important visitor on our premises. He is not dependent on us. We are dependent on him. He is not an interruption in our work. He is the purpose of it. He is not an outsider in our business. He is part of it. We are not doing him a favour by serving him. He is doing us a favour by giving us an opportunity to do so”.

- By Mr. M. K. Gandhi (The Father of Nation)

MADE IN INDIA GLOBAL RECOGNISATION.....



“WE BELIEVE”

Service is the lifeline of our organization, Everything flows from it, and is nourished by it. Customer service is not a Department, it is an Attitude.

trust is always earned...never given!



Represented By



Contact Us:

DHWANI INDUSTRIES

3, GROUND FLOOR,
DUN SHOPPING CENTRE,
OPP. GAMADIA COLONY,
225-227, J. D. ROAD, TARDEO,
MUMBAI - 400 007, INDIA.



PHONE : (+91 22) 2381 4034
(+91 22) 2382 4034

CELL : +91-98690 86568
+91-98207 86568

EMAIL : SPARES@AUTOCONERSPARES.IN
SANKET@AUTOCONERSPARES.IN

WEB : WWW.AUTOCONERSPARES.IN

© Copyright Rights

We own all copyright rights in the text, images, photographs, graphics, user interface, and other content provided on this catalogue, and the selection, coordination, and arrangement of such content, to the full extent provided under the copyright laws of the India and other countries. Except as expressly provided in written permission, anyone are prohibited implied from copying, reproducing, modifying, distributing, displaying, performing or transmitting any of the contents of this our product catalogue for any purposes, and nothing otherwise stated or in the Services confers on you any license or right to do so.

Any other use, including for any commercial, personal purposes, is strictly prohibited without our express prior written consent.